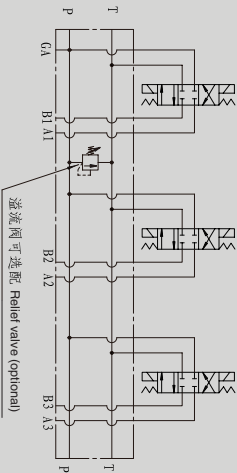


**HSD(A)ZVB10P 阀板系列**

**HSD(A) ZVB10P SERIES MANIFOLD**

**符号 SYMBOL**



➤ HSD(A)ZVB10P 阀板 MANIFOLD



A=铝LD7最高压力20.7MPa  
D=钢45#最高压力31.5MPa  
A=Aluminum max pressure 20.7MPa  
D=Steel max pressure 31.5MPa

ZVB10=10通径阀板  
ZVB10=NG10 manifold

P=并联油路块  
P=Parallel connection

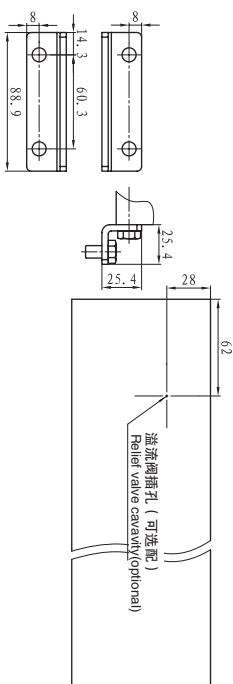
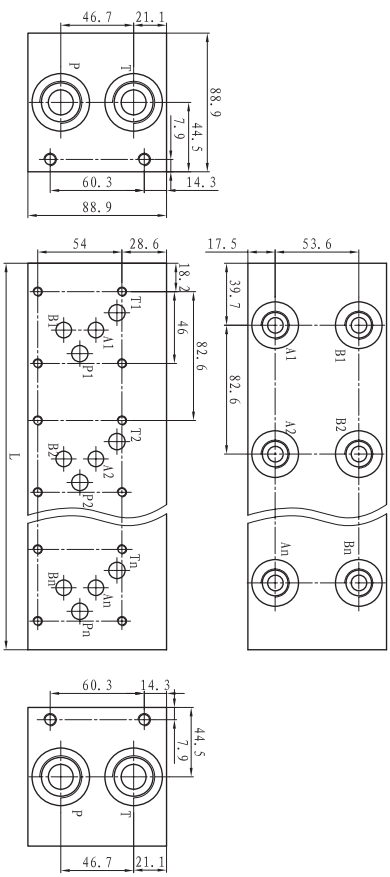
并接数量 Stations number  
1-2-3-4-5-6-7-8-9-10

附加说明  
For further details

省略=无溢流阀插孔  
C=溢流阀插孔,10-2  
C=With cavity of relief valve 10-2

油路块螺纹 Thread type	P.T	AB	GA
P NPT(Z)	NPT3/4	NPT1/2	NPT1/4
S SAE	SAE12	SAE8	SAE6
B BSP(G)	BSP3/4	BSP1/2	/
M M	M27X2	M18X1.5	/

➤ HSD(A)ZVB10P 阀板 外形尺寸 HSD(A)ZVB10P Installation Dimensions



油路块螺纹 Thread type	并接数量 Stations number	油路块安装螺纹 Manifold installation thread
P.S	1-10	1/4-20UNCx13DP
B.M	1-10	5/16-18UNCx12DP

并接数量 Stations number	1	2	3	4	5	6	7	8	9	10
L(mm)	82.6	165.1	247.7	330.2	412.8	495.3	577.9	660.4	743	825.5

注：1. 带溢流阀的油路块长度为101.6mm。1. 不带溢流阀的油路块长度为82.6mm。  
Attention: The length of 1 station manifold with relief valve is 101.6mm, 1 station manifold without oil port for pressure gauge.